



1) a) Use the bar model to find 10% of 420.

420									
10%	20%	30%	40%	50%	60%	70%	80%	90%	100%

b) How does finding 10% of 420 help us to find 20% of 420?

c) Now use the bar model to find these percentages of 420.

30% =	40% =	60% =	90% =
-------	-------	-------	-------

2) a) Use the bar models to find 5% of 680.

680									
10% = ____	20%	30%	40%	50%	60%	70%	80%	90%	100%



5%	5%
= ____	

b) How does finding 10% of 680 help us to find 5% of 680?

c) Now use the bar model to find these percentages of 680.

35% =	45% =	65% =	95% =
-------	-------	-------	-------





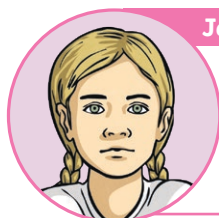
1) True or False? Give an example that proves when a statement is true.

a) To find 30% of a number, I can divide the number by 10 then multiply by 3.

b) To find 30% of a number, I can divide the number by 30.

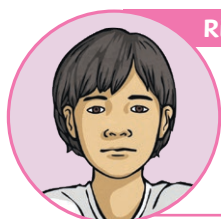
c) To find 30% of a number, I can divide the number by 100 then multiply by 30.

2) Jemelin, Riyonn and Lubna are discussing their methods for finding 15% of 800. Will each child's method work? Which method do you prefer and why?



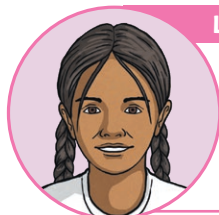
Jemelin:

*I know $10\% + 5\% = 15\%$
 10% of 800 = 80
 5% is half of 10% so 5% equals 40.
 $80 + 40 = 120$*



Riyonn:

*I know $1\% \times 15 = 15\%$
 1% of 800 = 8
 $15 \times 8 = 120$*









Lubna:

*I know $25\% - 10\% = 15\%$
 25% of 800 = 200
 10% of 800 = 80
 $200 - 80 = 120$*

- 1) This table shows the percentage of each food served by a school kitchen in a year.
 There are 40 weeks in the school year.
 The school kitchens served 120kg of food per week.
 How much food was served in total?



Complete the table to show much of each food type was served.

	Food	Percentage	Amount served in a year
	Vegetables	30%	_____ kg
	Potatoes	10%	_____ kg
	Meat	15%	_____ kg
	Rice	35%	_____ kg
	Salad	9%	_____ kg
	Fruit	1%	_____ kg

- 2) Complete this percentage statement in five different ways.
 Don't use each percentage or number more than twice.

Mutliple of 5%	of	Number from 10 - 500	=	Multiple of 5%	of	Number from 10 - 500
40%	of	180	=	15%	of	480