

Multiply by 10, 100 and 1,000

Dr. Zordon has created three robots with different functions. He has given each robot two different number cards.

1.212

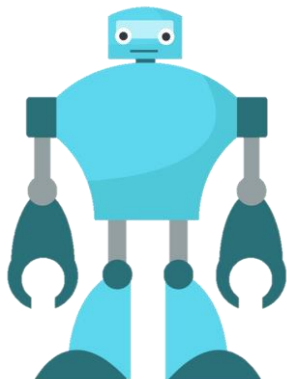
1.321

3.332

4.3

5.02

2.102



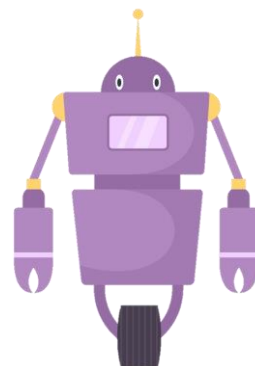
Robot 1

x 400



Robot 2

x 1,000



Robot 3

x 20

Investigate the possible numbers each of the robots could have generated with their two number cards.

Various answers, for example:

Robot 1: $1.212 \times 400 = 484.8$ and $2.102 \times 400 = 840.8$; Robot 2: $4.3 \times 1,000 = 4,300$ and $5.02 \times 1,000 = 5,020$; Robot 3: $3.332 \times 20 = 66.64$ and $1.321 \times 20 = 26.42$