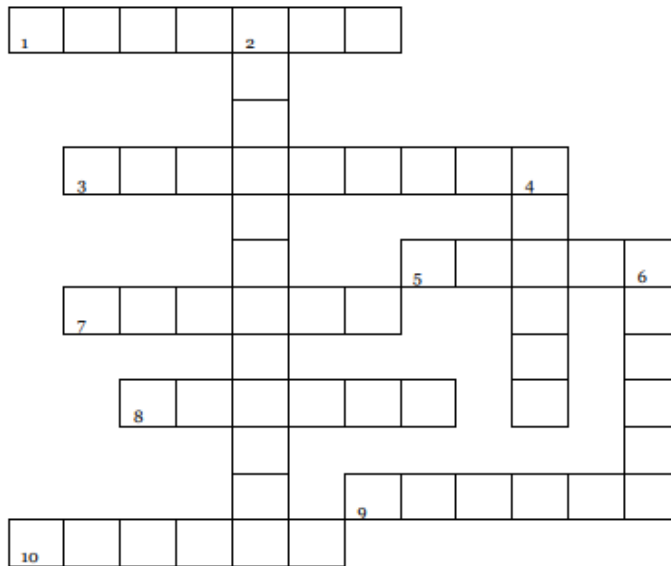


Use your knowledge and the facts from page 1 to complete this crossword?



Across

1. Scientific word for different types of plants and animals.
3. To sleep through the winter.
5. The head of a bee colony.
7. Six-legged animal.
8. Daughter of a queen bumblebee.
9. The part of the plant that bees like to visit.
10. Dust-like food for bees.

Down

2. Animals without backbones.
4. You need this to move and grow.
6. A sugary juice inside flowers.

Did You Know?

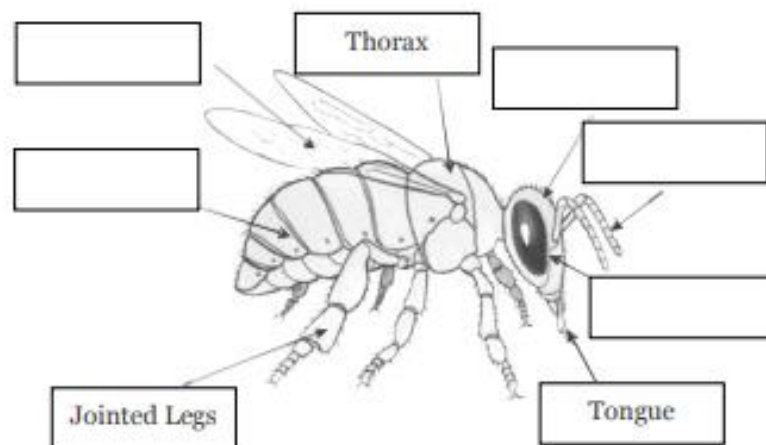
Bumblebees have **hairy legs** (to help collect food) and **smelly feet** (to let other bees know that they have visited a flower).

Bumblebees are obviously animals - but what type?

Scientists call them **Invertebrates** (animals without a backbone), and put them in a big group called the **Arthropods** (invertebrates with jointed legs). More specifically, they are **Insects** (arthropods with six legs). There are about 250 different types (**species**) of bumblebee in the world. Twenty-four of these live in Britain.

Can you finish this picture of a White-tailed bumblebee?

Use these keywords: Eye, Wing, Antenna, Head, Abdomen.



Bumblebee Facts

- To give them **energy** to move and grow, bumblebees drink sweet, sugary **nectar** from inside **flowers**, and eat the dust-like **pollen** from the male parts (**stamen**) of flowers.
- Bumblebees live together in family groups (**colonies**) in a nest - often underground.
- Each nest has a mother bee (**Queen**) together with lots of her daughters (**worker bees**) and sons (**drones**).
- Bumblebees have hair to keep them warm, but each winter the cold kills-off all of the drones and worker bees.
- Queen bees sleep (**hibernate**) through the winter and wake in the spring, when they search-out a new nest to lay eggs and start a new colony.