

Varied Fluency

Step 1: Measure Mass 1

National Curriculum Objectives:

Mathematics Year 3: (3M2b) [Measure mass \(kg/g\)](#)

Differentiation:

Developing Questions to support measuring mass. Increments of 1, 2, 5 or 10 used. All increments labelled.

Expected Questions to support measuring mass. Increments of 4, 8, 50 or 100 used. Some scales have every other increment labelled.

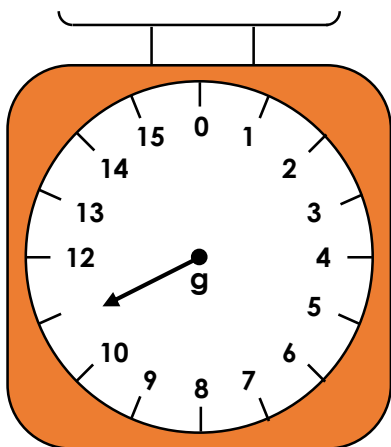
Greater Depth Questions to support measuring mass. Increments of 4, 8, 50 or 100 used, but (most/no) increments are (not) labelled on the scales.

More [Year 3 Mass and Capacity](#) resources.

Did you like this resource? Don't forget to [review](#) it on our website.

Measure Mass 1

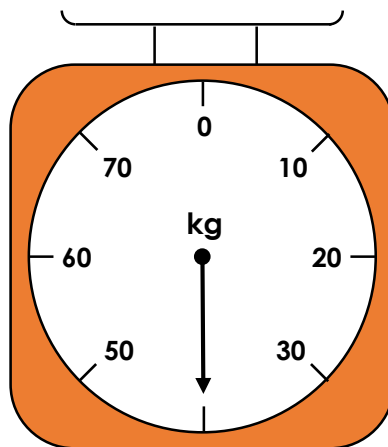
1a. What mass is the arrow showing on this scale?



VF

Measure Mass 1

1b. What mass is the arrow showing on this scale?



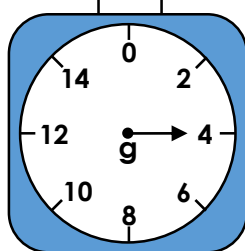
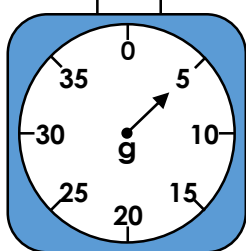
VF

2a. Which object is the heaviest?

A



B



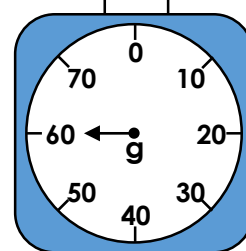
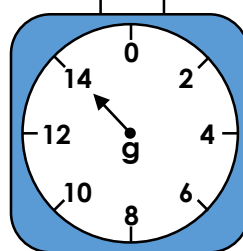
VF

2b. Which object is the lightest?

A



B



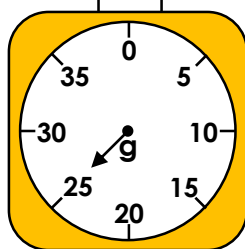
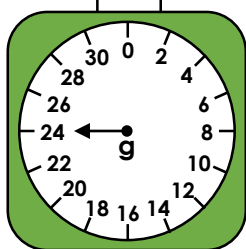
VF

3a. How much does each object weigh?

A



B



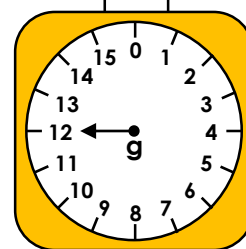
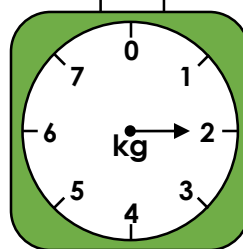
VF

3b. How much does each object weigh?

A



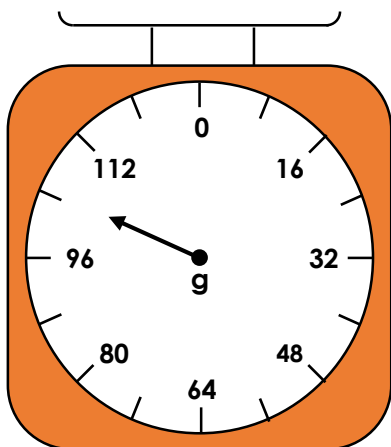
B



VF

Measure Mass 1

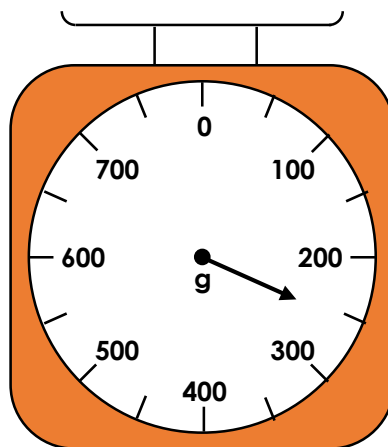
4a. What mass is the arrow showing on this scale?



VF

Measure Mass 1

4b. What mass is the arrow showing on this scale?



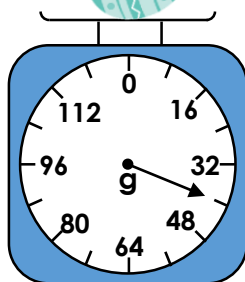
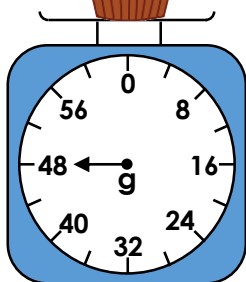
VF

5a. Which object is the heaviest?

A



B



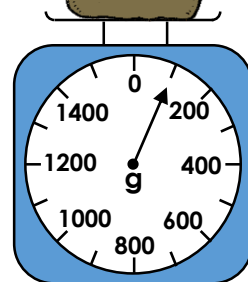
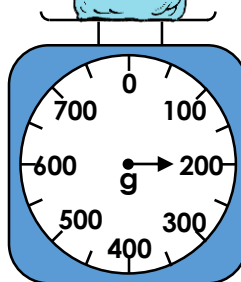
VF

5b. Which object is the lightest?

A



B



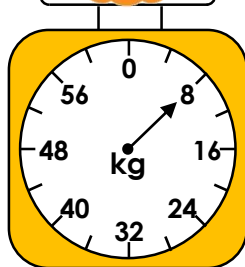
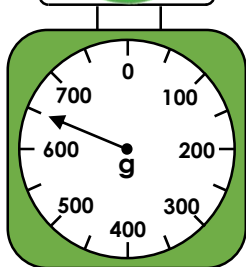
VF

6a. How much does each object weigh?

A



B



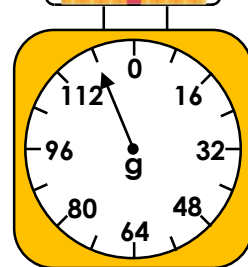
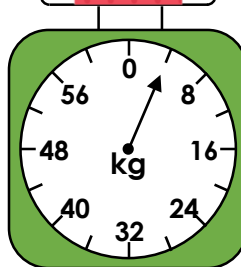
VF

6b. How much does each object weigh?

A



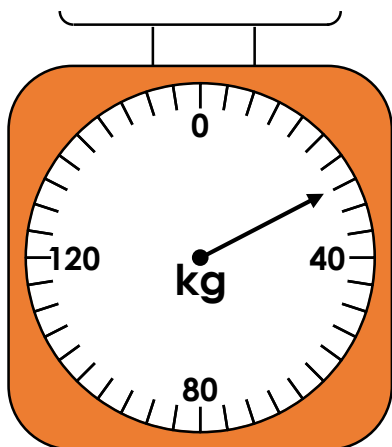
B



VF

Measure Mass 1

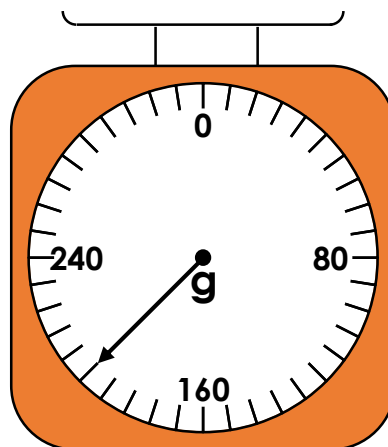
7a. What mass is the arrow showing on this scale?



VF

Measure Mass 1

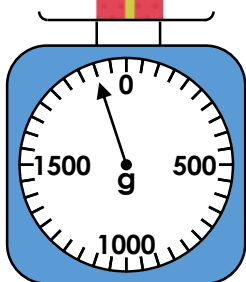
7b. What mass is the arrow showing on this scale?



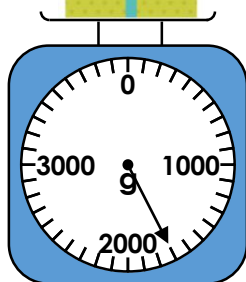
VF

8a. Which object is the heaviest?

A



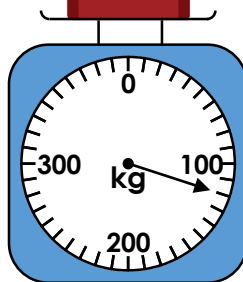
B



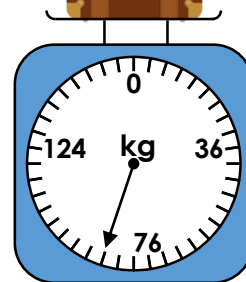
VF

8b. Which object is the lightest?

A



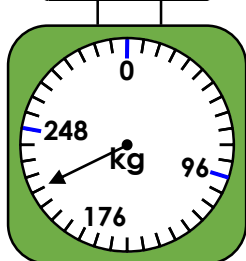
B



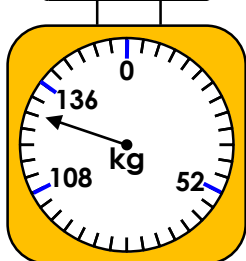
VF

9a. How much does each object weigh?

A



B

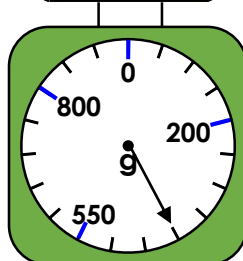


VF

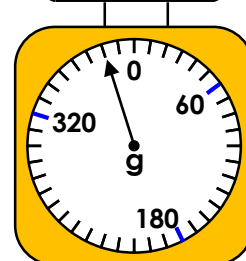
9b. How much does each object weigh?



A



B



VF

Varied Fluency
Measure Mass 1

Developing

1a. 11g

2a. A

3a. A = 24g, B = 25g

Expected

4a. 104g

5a. A

6a. A = 650g, B = 8kg

Greater Depth

7a. 28kg

8a. A

9a. A = 216kg, B = 128kg

Varied Fluency
Measure Mass 1

Developing

1b. 40kg

2b. A

3b. A = 2kg, B = 12g

Expected

4b. 250g

5b. B

6b. A = 4kg, B = 120g

Greater Depth

7b. 200g

8b. B

9b. A = 400g, B = 380g